

Moth Biodiversity in Central Kerala: A Comprehensive Examination of Urban and High-Altitude Habitats with new Distribution record of Palaeosetidae

Raman Mahesh¹, Ashley Shaji², Nizamudheen Moinudheen³, Rishi Kesavan⁴, Arockianathan Samson⁵

1 Kattiparambu Madam, Thekumbhagam,
Tripunithura, Ernakulam, Kerala, India.

2 College of Medical, Veterinary & life
science, University of Glasgow, Scotland.

3 Independent Researcher in Nilgiri Hills
Tamil Nadu 643 001, India.

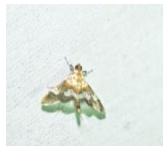
4 Department of Zoology, Government arts
college, Ooty, Tamil Nadu, India.

5 Vulture conservation Breeding centre,
Bombay Natural History Society, Bhopal,
Madhya Pradesh, India.

Supplementary File



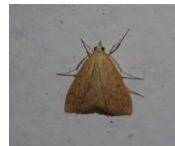
Aethaloessa calidalis



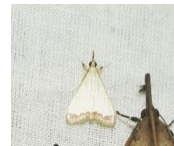
Aetholix flavibasalis



Agathodes ostentalis



Antigastra catalaunalis



Autocharis amethystina



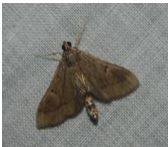
Bocchoris inspersalis



Botyodes sp



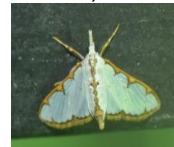
Bradina adhaesalis



Bradina atopalis



Bradina sp



Cirrochrista brizoalis



Cirrochrista fuscus



Cnaphalocrocis medinalis



Cnaphalocrocis poeyalis



Conogethes punctiferalis



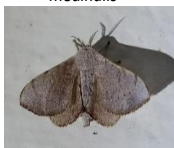
Cossus cossus



Cotachena sp



Cydalima laticostalis



Oconaria albicollis



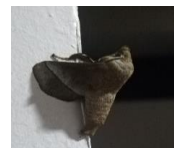
Penicillifera apicalis



Polyphagozerra coffeae



Tetragonus catamitus



Trilocha varians



Xyleutes persona



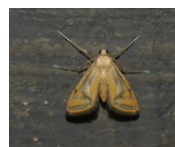
Diaphania indica



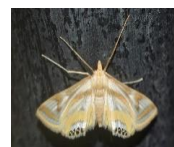
Dichocrocis rigidalis



Dichocrocis tigrina



Eoophyla sejunctalis



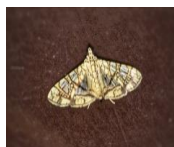
Eoophyla sp



Eurryparodes bractealis



Glyphodes bivitalis



Haritalodes derogata



Glyphodes pulverulentis



Haritalodes derogata



Herpetogramma rudis



Herpetogramma sp



Hydriris elutalis



Mabra eryxalis



Malickyella lobophoralis



Maruca vitrata



Nacoleia charesalis



Nausinoe geometralis



Omiodes diemenalis



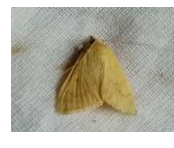
Omiodes indicata



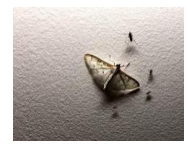
Ostrinia sp



Pachynoa sp



Paliga macheralis



Palpita annulifer



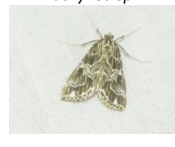
Palpita vitrealis



Palpita sp



Paracymoriza olivalis



Paracymoriza olivalis



Parapoynx diminutalis



Parapoynx fluctuosalis

Supplementary Figure 1A. Moth Species Collection



Paraponyx stagnalis



Parotis marginata



Patonia iopassalis



Piletocera concissalis



Piletocera sodalis



Pilocrocis milvinalis



Poliobotys ablactalis



Polythilta divaricata



Prooedema incisalis



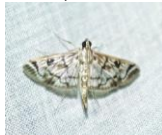
Pygopsila costiflexalis



Pygopsila tyres



Rehimena phrynealis



Rhimphalea ochalis



Sciraphaga sp



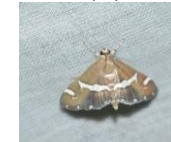
Sciraphaga incertulas



Sciraphaga nivella



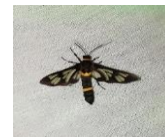
Scopariinae



Spoladea recurvalis



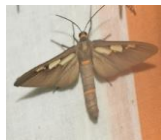
Aemene taprobanis



Amata bicincta



Amata cyssea



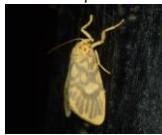
Amata extensa



Amata passalis



Amerila astreus



Amerila astreus



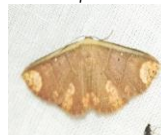
Anoba polyspila



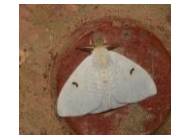
Anomis flava



Araeopteron sp



Arasada sp



Arctornis comma



Arctornis marginata



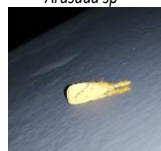
Arctornis sp



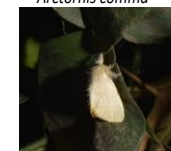
Arctornis submarginata



Artaxa guttata



Artaxa inconcisa



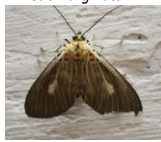
Artaxa sp



Asota canaraica



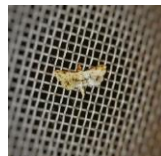
Asota caricae



Asota heliconia



Ethmia sp



Sufetula sp



Syngamia falsidicalis



Tabotys biannulalis



Asota plana



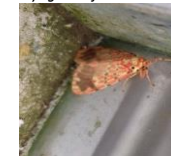
Asota sericea



Attatha regalis



Barsine coneonotatus



Barsine sp



Bastilla arcuata



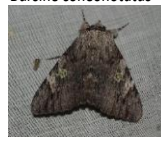
Tabotys biannulalis



Brunia antica



Buzara onelia

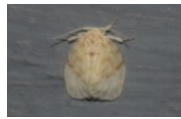


Catocala macula



Cerynea punctilinealis

Supplementary Figure 1B. Moth Species Collection



Chamaita sp



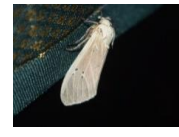
Cleora fraterna



Coleta coleta



Corgatha semipardata



Creatonotas transiens



Creatonotas gangis



Cyana bhatejai



Cyana peregrina



Dasychira thwaitesii



Diduga sp



Digama marchalii



Dunira maculapex



Ericeia pretendens



Enispa regulata



Episaria tortusalis



Erebus hieroglyphica



Dunira maculapex



Ericeia inangulata



Eudocima cajeta



Eudocima hypermnestra



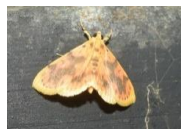
Eudocima materna



Eugo basipuncta



Euproctis scintillans



Eusabena miltochristalis



Garudinia pseudosimulana



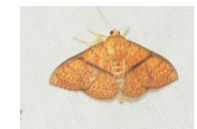
Gesonia sp



Goniocraspedon mistura



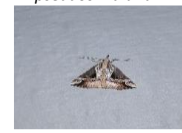
Homodes crocera



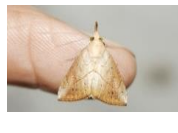
Homodes vivida



Hulodes caranea



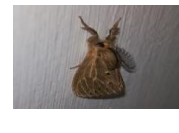
Hypena sp



Hypena sp



Hypopyra vespertilio



Laeila sp



Laspeyria viridicincta



Lemyra sp



Lemyra sp



Luceria sp



Lygniodes vampyrus



Lymantria ampla



Lymantria incerta



Lymantria sp



Lymantria todara



Macatasa orientalis



Machrobrachis gigas



Mecodina albodentata



Metalectra discalis



Miltochrista arcuata



Miltochrista conjuctana



Miltochrista sp



Miltochrista sp



Miltochrista strigivenata



Mocis undata

Supplementary Figure 1C. Moth Species Collection



Nephelomita suffusa



Nolasena ferrifervens



Olulis sp



Orvasca subnotata



Oxaenus brontesalis



Eudocima cajeta



Olepa ricini



Olulis sp



Olulis sp



Orvasca subnotata



Oxaenus brontesalis



Oxyodes billeti



Padenia transversa



Pangora matherana



Pericyma cruegeri



Perina nuda



Phyllodes consobrina



Polydesma sp



Prabhasa distorta



Prabhasa distorta



Rusicada fulvida



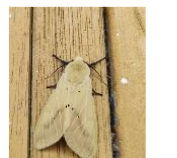
Simplica bimarginata



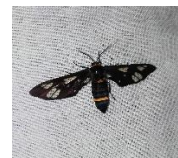
Somena scintillans



Sphingomorpha chlorea



Spilosoma sp



Syntomoides imaoon



Syntomoides imaoon



Thysanoptyx sordida



Tinolius eburneigutta



Triganodes hypasia



Triganodes hypasia



Abraxa poliaria



Abraxas leucostola argyrosticta



Abraxas leucostola argyrosticta



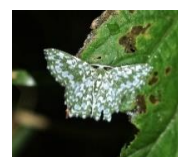
Amblychia angeronaria



Anavitrinella pampinaria



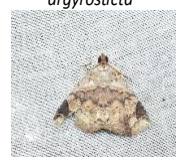
Aporandaria specularia



Betra chrysolineata



Biston suppressaria



Boletobiinae



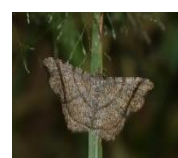
Borbacha sp



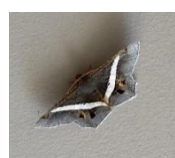
Cataria sublavaria



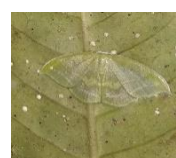
Celenna festiviaria



Chiasmia perfusaria



Chiasmia sp



Chlorozancla falcatus



Comibaena sp



Comostola meritaria.



Dyshania percota



Ecliptopera rectilinea



Ecliptopera rectilinea



Eois dissimilis



Spirama sp



Uteyheisa pulchella

Supplementary Figure 1D. Moth Species Collection



Zurobata vacilans



Abraxas sublepada



Acontia crocata



Acontia sp



Altha subnotata



Dendrolimus sp



Endoclyta sp



Hyblaea puera



Lebeda nobilis



Miresa argentifera



Miresa bracteata



Narosa sp



Parasa fumosa



Parasa lepida



Scopelodes sp



Scopula immutata



Scopula umbilicata



Scythriopides malivora



Thalassodes sp



Thalassodes sp



Trabala sp



Traminda aventiaria



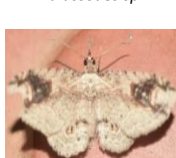
Traminda convectaria



Vanlangia sp



Zamarada excisa



Ziridava kanshirensis



Amyna axis



Amyna punctum



Amyna axis



Bagada sp



Batracharta obliqua



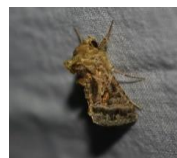
Bertula abjudicalis



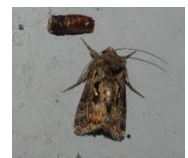
Blasticorhinus rivulosa



Callyna monoleuca



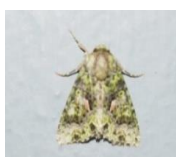
Chrysodeixis acuta



Chrysodeixis eriosoma



Condica illecta



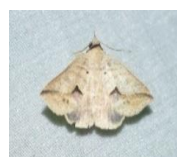
Ctenophora tarsota



Ctenoplusia furcifera



Cyclodes omma



Dierna patibulum



Episteme adulatrix



Eublemma accedens



Eublemma olivacea



Eublemma sp



Herminia cidaroides



Hipoepa fractalis



Hypocala affinis



Ischyja manila



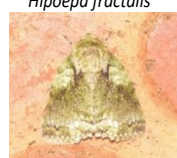
Lacinipolia sp



Lophoptera sp



Barosa sp



Blenina sp



Carea angulata

Supplementary Figure 1E. Moth Species Collection



Carea varipes



Earias flavida



Eligma narcissus



Lacinipolia sp



Lophoptera squammigera



Lophoptera squammigera



Lophoptera squammigera



Maliattha sp



Maurilia sp



Maurilia sp



Nola analis



Ozarba punctigera



Polygrammate sp



Polytela gloriosae



Progonia oileusalis



Rivula sp



Spodoptera pecten



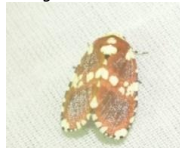
Trachea auriplena



Tramba mnionomera



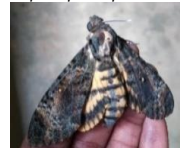
Xenotrachea albidisaca



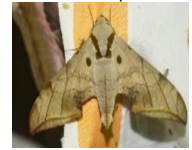
Yepcalphis dilectissima



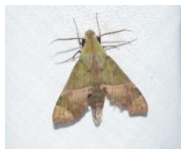
Zonoplusia ochreatea



Acherontia lachesis



Ambulyx aglaia



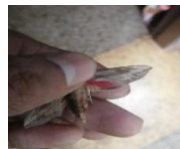
Angonyx krishna



Daphnis nerii



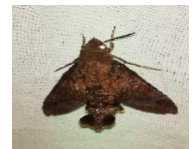
Eretnocera impactella



Hippotion boerhavia



Macroglossum assimilis



Macroglossum belis



Macroglossum corythus



Macroglossum corythus,



Macroglossum corythus,



Macroglossum trogloductus



Marumba dyras



Melittia chalciformis



Phycitinae sp



Phycitinae sp



Plodia interpunctella



Pyralis manihotalis



Rostrispalus



Salma sp.



Salma sp



Teliphasa nubilosa



Termioptycha albifrucalis



Vitessa suradeva



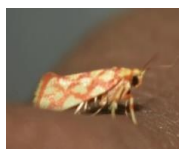
Zitha tactilis



Actias keralana



Akinsonia sp



Anticrates sp



Attacus taprobanis



Chlumetia

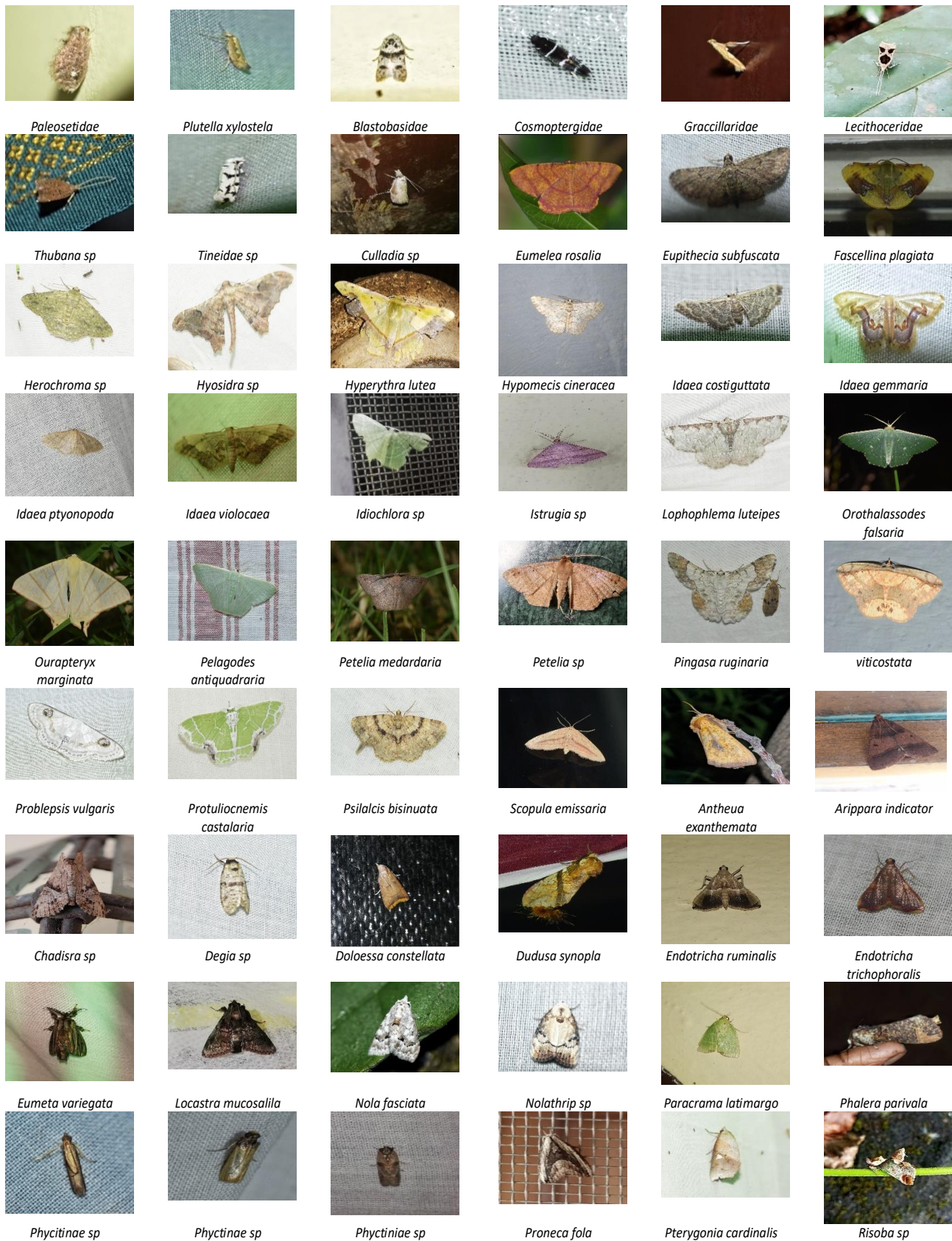


Circula trifenestrata



Cosmopterix sp

Supplementary Figure 1F. Moth Species Collection



Supplementary Figure 1G. Moth Species Collection



Selepa celtis



Stauropus alternus



Stauropus thiaucourti



Westermannia superba



Xanthodes transversa



Acleris subtusnigra



Adoxophyes sp



Archips machlopiis



Bactra sp



Banisia myrusalis



Calindoea tetraonalis



Collinsa acutalis



Cryptophlebia ombrodelta



Dudua aprobola



Gatesclarkeana idia



Homona sp.



Lobesia sp



Loboschiza sp



Marumba nympa



Micronia aculata



Phazaca leucocera



Rhagastis sp



chilandontini



Sorolopha cyclotoma



Spilogramma vates



Striglina scitaria



Theretra latreillii



Theretra lycetus



Theretra nessus



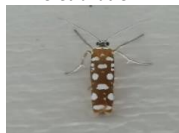
Theretra silhetensis



Anacampsis sp



Anarsia sp



Atteva fabriciella



Canucha specularis



Coconympha iriarcha



Cyclosia latipennis



Dassyes sp



Dassyes sp



Deuterocopus sp



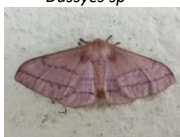
Edosa sp



Eupterote lineosa



Eupterote mollifera



Eupterote undata



Exelastis pumilio



Ganisa similis



Gerontha rugulosa



Helcystogramma sp



Phalacra vidhisara



Sphenarches anisodactylus



Stathmopoda gemmiconsuta



Stegasta sp



Teldenia vestigata



Thyragia subcorda



Tineidae sp

Supplementary Figure 1H. Moth Species Collection

Table S1/ A total of 483 moth species checklist in central Kerala.

S.no	Super Family	Family	Subfamily	Genus	Species
1	Hepialoidea	Palaeosetidae			<i>Palaeosetidae Sp.1</i>
2	Hepialoidea	Hepialidae		<i>Endoclita</i>	<i>Endoclita sp.</i>
3	Tineoidea	Psychidae	Oiketicinae	<i>Eumeta</i>	<i>Eumeta variegata</i> (Snellen,1879)
4	Tineoidea	Psychidae	Typhoniinae	<i>Degia</i>	<i>Degia sp.</i>
5	Tineoidea	Tineidae	Hapsiferinae	<i>Dasyses</i>	<i>Dasyses sp.1</i>
6	Tineoidea	Tineidae	Hapsiferinae	<i>Dasyses</i>	<i>Dasyses sp.2</i>
7	Tineoidea	Tineidae	Perissomastici nae	<i>Edossa</i>	<i>Edossa sp.</i>
8	Tineoidea	Tineidae	Myrmecozelin ae	<i>Gerontha</i>	<i>Gerontha rugulosa</i> (Xiao, 2009)
9	Tineoidea	Tineidae			<i>Tineidae Sp.1</i>
10	Tineoidea	Tineidae	Tineinae	<i>Monopis</i>	
11	Gracillaroidea	Gracillaridae			<i>Gracillaridae Sp.1</i>
12	Yponomeutoi dea	Plutellidae	Plutellinae	<i>Plutella</i>	<i>Plutella xylostella</i> (Linnaeus,1758)
13	Yponomeutoi dea	Attevidae		<i>Atteva</i>	<i>Atteva fabriciella</i> (Swedrus,1787)
14	Gelechioidea	Lecithocerida e			<i>Lecithoceridae Sp.1</i>
15	Gelechioidea	Lecithocerida e	Torodorinae	<i>Thubana</i>	<i>Thubana sp.</i>
16	Gelechioidea	Blastobasidae			<i>Gelechioidea Sp1.</i>
17	Gelechioidea	Oecophoridae	Stathmopodin ae	<i>Stathmopoda</i>	<i>Stathmopoda gemmiconsuta</i> (Terada, 2012)
18	Gelechioidea	Ethmiidae		<i>Ethmia</i>	<i>Ethmia sp.</i>
19	Peleopodoide a	Pelepodidae	Oditinae	<i>Scythropoides</i>	<i>Scythropiodes malivora</i> (Meyrick,1930)
20	Gelechioidea	Stathmopodid ae		<i>Akinsonia</i>	<i>Akinsonia sp.</i>
21	Gelechioidea	Scythrididae	Scythridinae	<i>Eretmocera</i>	<i>Eretmocera impactella</i> (Walker,1864)

22	Gelechioidea	Cosmopterigidae	Cosmopteriginae	<i>Cosmopterix sp.</i>	<i>Cosmopterix sp.</i>
23	Gelechioidea	Cosmopterigidae			<i>Cosmopterigidae Sp.1</i>
24	Gelechioidea	Gelechiidae	Anacampsininae	<i>Anacampsininae</i>	<i>Anacampsininae sp.</i>
25	Gelechioidea	Gelechiidae	Anacampsininae	<i>Anarsia</i>	<i>Anarsia sp.</i>
26	Gelechioidea	Gelechiidae	Gelechiinae	<i>Coconympha</i>	<i>Coconympha iriarcha</i> (Meyrick,1931)
27	Gelechioidea	Gelechiidae	Dichomeridinae	<i>Helycstogramma</i>	<i>Helycstogramma sp.</i>
28	Gelechioidea	Gelechiidae	Gelechiinae	<i>Stegasta</i>	<i>Stegasta sp.</i>
29	Pterophoroidea	Pterophoridae	Deuterocopininae	<i>Deuterocopus</i>	<i>Deuterocopus socotranus</i> (Rebel,1907)
30	Pterophoroidea	Pterophoridae	Pterophorinae	<i>Exelastis</i>	<i>Exelastis pumilio</i> (Zeller,1873)
31	Pterophoroidea	Pterophoridae	Pterophorinae	<i>Sphenarches</i>	<i>Sphenarches anisodactylus</i> (Walker,1864)
32	Torticoidea	Tortricidae	Tortricinae	<i>Adoxophyes</i>	<i>Adoxophyes sp.</i>
33	Torticoidea	Tortricidae	Tortricinae	<i>Acleris</i>	<i>Acleris subtusnigra</i>
34	Torticoidea	Tortricidae	Tortricinae	<i>Archips</i>	<i>Archips machlopiis</i> (Meyrick,1912)
35	Torticoidea	Tortricidae	Olethreutinae	<i>Bactra</i>	<i>Bactra sp.</i>
36	Torticoidea	Tortricidae	Olethreutinae	<i>Cryptophlebia</i>	<i>Cryptophlebia ombrodelta</i> (Lower,1898)
37	Torticoidea	Tortricidae	Olethreutinae	<i>Dudua</i>	<i>Dudua aprobola</i> (Meyrick,1886)
38	Torticoidea	Tortricidae	Olethreutinae	<i>Gatesclarkeana</i>	<i>Gatesclarkeana idia</i> (Diakonoff,1973)
39	Torticoidea	Tortricidae	Tortricinae	<i>Homona</i>	<i>Homona sp.</i>
40	Torticoidea	Tortricidae	Olethreutinae	<i>Lobesia</i>	<i>Lobesia sp.</i>
41	Torticoidea	Tortricidae	Olethreutinae	<i>Loboschiza</i>	<i>Loboschiza sp.</i>
42	Torticoidea	Tortricidae	Olethreutinae	<i>Eucomogastra</i>	<i>Loboschiza sp.</i>
43	Torticoidea	Tortricidae	Olethreutinae	<i>Sorolopha</i>	<i>Sorolopha cyclotoma</i> Lower,1901
44	Cossoidea	Cossidae	Catoptinae	<i>Catopta</i>	<i>Catopta sp.</i>
45	Cossoidea	Cossidae	Zeuzerinae	<i>Zeuzera</i>	<i>Zeuzera coffeae</i> (Nietner,1861)
46	Cossoidea	Cossidae	Zeuzerinae	<i>Xyleutes</i>	<i>Xyleutes persona</i> (Le Guillou,1841)

47	Sesioidea	Sessidae	Sesiinae	<i>Melittia</i>	<i>Melittia chalciformis</i> (Fabricius,1793)
48	Zygaenoidea	Lacturidae			<i>Anticrates sp.</i>
49	Zygaenoidea	Limacodidae	Limacodinae	<i>Altha</i>	<i>Altha subnotata</i> (Walker,1865)
50	Zygaenoidea	Limacodidae	Limacodinae	<i>Miresa</i>	<i>Miresa argentifera</i> (Walker,1855)
51	Zygaenoidea	Limacodidae	Limacodinae	<i>Miresa</i>	<i>Miresa bracteata</i> (Butler,1880)
52	Zygaenoidea	Limacodidae	Limacodinae	<i>Narosa</i>	<i>Narosa sp.</i>
53	Zygaenoidea	Limacodidae	Limacodinae	<i>Parasa</i>	<i>Parasa fumosa</i> (Swinhoe,1889)
54	Zygaenoidea	Limacodidae	Limacodinae	<i>Parasa</i>	<i>Parasa lepida</i> (Cramer,1799)
55	Zygaenoidea	Limacodidae	Limacodinae	<i>Scopelodes</i>	<i>Scopelodes sp.</i>
56	Zygaenoidea	Limacodidae	Limacodinae	<i>Spatulifimbria</i>	<i>Spatulifimbria sp.</i>
57	Zygaenoidea	Limacodidae	Limacodinae	<i>Vanlangia</i>	<i>Vanlangia sp.</i>
58	Zygaenoidea	Limacodidae	Limacodinae	<i>Thosea</i>	<i>Thosea sp.</i>
59	Zygaenoidea	Zygaenidae	Chalcosiinae	<i>Cyclosia</i>	<i>Cyclosia latipennis</i> (Hampson,1891)
60	Zygaenoidea	Zygaenidae	Procridinae	<i>Thyrassia</i>	<i>Thyrassia subcorda</i> (Walker,1854)
61	Thyridoidea	Thyrididae	Striglininae	<i>Banisa</i>	<i>Banisa myrusalis</i> (Walker,1859)
62	Thyridoidea	Thyrididae	Siculodinae	<i>Collinsa</i>	<i>Collinsa acutalis</i> Walker, 1866)
63	Thyridoidea	Thyrididae	Siculodinae	<i>Calindoea</i>	<i>Rhodoneura anticalis</i> (Walker, 1866)
64	Thyridoidea	Thyrididae	Striglininae	<i>Striglina</i>	<i>Striglina scitaria</i> (Walker,1862)
65	Hyblaeoidea		Hyblaeidae	<i>Hyblaea</i>	<i>Hyblaea puera</i> (Cramer 1777)
66	Calliduloidea	Callidulidae	Callidulinae	<i>Tetragonus</i>	<i>Tetragonus catamitus</i> (Geyer, 1832)
67	Pyraloidea	Pyralidae	Pyralinae	<i>Arippara</i>	<i>Arippara indicator</i> (Walker,1864)
68	Pyraloidea	Pyralidae	Galleriinae	<i>Doloessa</i>	<i>Doloessa constellata</i> (Hampson,1898)
69	Pyraloidea	Pyralidae	Pyralinae	<i>Endotricha</i>	<i>Endotricha ruminalis</i> (Walker,1859)
70	Pyraloidea	Pyralidae	Pyralinae	<i>Endotricha</i>	<i>Endotricha trichophoralis</i> (Hampson,1906)
71	Pyraloidea	Pyralidae	Epipaschiinae	<i>Locastra</i>	<i>Locastra mucosalila</i> (Walker, 1866)
72	Pyraloidea	Pyralidae	Phycitinae	<i>Phycitinae</i>	<i>Phycitinae sp.1</i>
73	Pyraloidea	Pyralidae	Phycitinae	<i>Phycitinae</i>	<i>Phycitinae sp.2</i>
74	Pyraloidea	Pyralidae	Phycitinae	<i>Phycitinae</i>	<i>Phycitinae sp.3</i>

75	Pyrloidea	Pyalidae	Phycitinae	<i>Phycitinae</i>	<i>Phycitinae sp.4</i>
76	Pyrloidea	Pyalidae	Phycitinae	<i>Phycitinae</i>	<i>Phycitinae sp.5</i>
77	Pyrloidea	Pyalidae	Pyalinae	<i>Pyalis</i>	<i>Pyalis manihotalis</i> (Guenée, 1854)
78	Pyrloidea	Pyalidae	Pyalinae	<i>Rostripalpus</i>	<i>Rostripalpus sp.</i>
79	Pyrloidea	Pyalidae	Epipaschiinae	<i>Salma</i>	<i>Salma sp.1</i>
80	Pyrloidea	Pyalidae	Epipaschiinae	<i>Salma</i>	<i>Salma sp.2</i>
81	Pyrloidea	Pyalidae	Epipaschiinae	<i>Teliphasa</i>	<i>Teliphasa nubilosa</i> (Moore,1888)
82	Pyrloidea	Pyalidae		<i>Termioptycha</i>	<i>Termioptycha albifurcalis</i> (Hampson,1916)
83	Pyrloidea	Pyalidae	Pyalinae	<i>Vitessa</i>	<i>Vitessa suradeva</i> (Moore, 1860)
84	Pyrloidea	Pyalidae	Pyalinae	<i>Zitha</i>	<i>Zitha tactilis</i> (Swinhoe,1890)
85	Pyrloidea	Crambidae	Spilomelinae	<i>Aethaloessa</i>	<i>Aethaloessa calidalis</i> (Guenée,1854)
86	Pyrloidea	Crambidae	Spilomelinae	<i>Aetholix</i>	<i>Aetholix flavibasalis</i> (Guenée,1854)
87	Pyrloidea	Crambidae	Spilomelinae	<i>Agathodes</i>	<i>Agathodes ostentalis</i> (Geyer,1837)
88	Pyrloidea	Crambidae	Spilomelinae	<i>Antigastra</i>	<i>Antigastra catalaunalis</i> (Duponchel,1833)
89	Pyrloidea	Crambidae	Odontinae	<i>Autocharis</i>	<i>Autocharis amethystina</i> (Swinhoe,1894)
90	Pyrloidea	Crambidae	Spilomelinae	<i>Bocchoris</i>	<i>Bocchoris inspersalis</i> (Zeller,1852)
91	Pyrloidea	Crambidae	Spilomelinae	<i>Botyodes</i>	<i>Botyodes sp.</i>
92	Pyrloidea	Crambidae	Spilomelinae	<i>Bradina</i>	<i>Bradina adhaesalis</i> (Walker, [1859])
93	Pyrloidea	Crambidae	Spilomelinae	<i>Bradina</i>	<i>Bradina atopalis</i> (Walker,1858)
94	Pyrloidea	Crambidae	Spilomelinae	<i>Bradina</i>	<i>Bradina sp.</i>
95	Pyrloidea	Crambidae	Spilomelinae	<i>Cirrhochrista</i>	<i>Cirrhochrista brizoalis</i> (Walker,1859)
96	Pyrloidea	Crambidae	Spilomelinae	<i>Cirrhochrista</i>	<i>Cirrhochrista fuscusa</i> (Chen,song &Wu, 2006)
97	Pyrloidea	Crambidae	Spilomelinae	<i>Marasmia</i>	<i>Marasmia poeyalis</i> (Boisduval ,1833)
98	Pyrloidea	Crambidae	Spilomelinae	<i>Conogethes</i>	<i>Conogethes punctiferalis</i> (Guenée,1854)
99	Pyrloidea	Crambidae	Spilomelinae	<i>Eusabena</i>	<i>Eusabena miltochristalis</i> (Hampson,1896)
100	Pyrloidea	Crambidae	Spilomelinae	<i>Catachena</i>	<i>Cotachena sp.</i>

101	Pyrloidea	Crambidae	Crambinae	<i>Culladia</i>	<i>Culladia sp.</i>
102	Pyrloidea	Crambidae	Spilomelinae	<i>Cydalima</i>	<i>Cydalima laticostalis</i> (Guenée,1854)
103	Pyrloidea	Crambidae	Spilomelinae	<i>Diaphania</i>	<i>Diaphania indica</i> (Saunders,1851)
104	Pyrloidea	Crambidae	Spilomelinae	<i>Dichocrocis</i>	<i>Dichocrocis rigidalis</i> (Snellen,1890)
105	Pyrloidea	Crambidae	Spilomelinae	<i>Dichocrocis</i>	<i>Dichocrocis tigrina</i> (Moore,1886)
106	Pyrloidea	Crambidae	Acentropinae	<i>Eoophyla</i>	<i>Eoophyla sejunctalis</i> (Snellen,1876)
107	Pyrloidea	Crambidae	Acentropinae	<i>Elophila</i>	<i>Elophila sp.</i>
108	Pyrloidea	Crambidae	Acentropinae	<i>Eoophyla</i>	<i>Eoophyla sp.</i>
109	Pyrloidea	Crambidae	Spilomelinae	<i>Eurryhparodes</i>	<i>Eurryhparodes bracteolalis</i> (Zeller,1852)
110	Pyrloidea	Crambidae	Spilomelinae	<i>Glyphodes</i>	<i>Glyphodes bivitratis</i> Guenée,1854
111	Pyrloidea	Crambidae	Spilomelinae	<i>Glyphodes</i>	<i>Glyphodes caesalis</i> (Walker,1859)
112	Pyrloidea	Crambidae	Spilomelinae	<i>Glyphodes</i>	<i>Glyphodes pulverulentalis</i> (Hampson,1896)
113	Pyrloidea	Crambidae	Spilomelinae	<i>Haritalodes</i>	<i>Haritalodes derogate</i> (Fabricius,1775)
114	Pyrloidea	Crambidae	Spilomelinae	<i>Herpetogramma</i>	<i>Herpetogramma rudis</i> (Warren,1892)
115	Pyrloidea	Crambidae	Spilomelinae	<i>Herpetogramma</i>	<i>Herpetogramma sp.</i>
116	Pyrloidea	Crambidae	Spilomelinae	<i>Hydriris</i>	<i>Hydriris elutalis</i> (Duponchel,1832)
117	Pyrloidea	Crambidae	Spilomelinae	<i>Mabra</i>	<i>Mabra eryxalis</i> (Walker,1859)
118	Pyrloidea	Crambidae	Spilomelinae	<i>Malickyella</i>	<i>Malickyella lobophoralis</i> (Hampson,1896)
119	Pyrloidea	Crambidae	Pyraustinae	<i>Maruca</i>	<i>Maruca vitrata</i> (Fabricius,1787)
120	Pyrloidea	Crambidae	Spilomelinae	<i>Metaoeca</i>	<i>Metaoeca foedalis</i> (Guenée,1854)
121	Pyrloidea	Crambidae	Spilomelinae	<i>Nacoleia</i>	<i>Nacoleia charesalis</i> (Walker,1859)
122	Pyrloidea	Crambidae	Spilomelinae	<i>Nausinoe</i>	<i>Nausinoe geometralis</i> (Guenée,1854)
123	Pyrloidea	Crambidae	Spilomelinae	<i>Omniodes</i>	<i>Omniodes diemenalis</i> (Guenée,1854)
124	Pyrloidea	Crambidae	Spilomelinae	<i>Omniodes</i>	<i>Omniodes indicata</i> (Fabricius,1775)
125	Pyrloidea	Crambidae	Pyraustinae	<i>Ostrinia</i>	<i>Ostrinia sp.</i>
126	Pyrloidea	Crambidae	Spilomelinae	<i>Pachynoa</i>	<i>Pachynoa sp.</i>
127	Pyrloidea	Crambidae	Pyraustinae	<i>Paliga</i>	<i>Paliga macherolis</i> (Walker,1859)

128	Pyrloidea	Crambidae	Spilomelinae	<i>Palpita</i>	<i>Palpita annulifer</i> (Inoue,1996)
129	Pyrloidea	Crambidae	Spilomelinae	<i>Palpita</i>	<i>Palpita unionalis</i> (Hübner,1796)
130	Pyrloidea	Crambidae	Spilomelinae	<i>Palpita</i>	<i>Palpita vitrealis</i> (Rossi,1794)
131	Pyrloidea	Crambidae	Acentropinae	<i>Paracymoriza</i>	<i>Paracymoriza albifascalis</i> (Hampson,1891)
132	Pyrloidea	Crambidae	Acentropinae	<i>Paracymoriza</i>	<i>Paracymoriza olivalis</i> (Hampson,1891)
133	Pyrloidea	Crambidae	Acentropinae	<i>Parapoynx</i>	<i>Parapoynx bilinealis</i> (Snellen,1876)
134	Pyrloidea	Crambidae	Acentropinae	<i>Parapoynx</i>	<i>Parapoynx diminutalis</i> (Snellen,1880)
135	Pyrloidea	Crambidae	Acentropinae	<i>Parapoynx</i>	<i>Parapoynx fluctuosalis</i> (Meyrick,1899)
136	Pyrloidea	Crambidae	Acentropinae	<i>Parapoynx</i>	<i>Parapoynx stagnalis</i> (Zeller,1852)
137	Pyrloidea	Crambidae	Spilomelinae	<i>Parotis</i>	<i>Parotis marginata</i> (Hampson,1893)
138	Pyrloidea	Crambidae	Spilomelinae	<i>Parotis</i>	<i>Parotis pomonalis</i> (Guenée,1854)
139	Pyrloidea	Crambidae	Spilomelinae	<i>Patonia</i>	<i>Patonia iopasalis</i> (Walker,1859)
140	Pyrloidea	Crambidae	Spilomelinae	<i>Piletocera</i>	<i>Piletocera concissalis</i> (Walker,1859)
141	Pyrloidea	Crambidae	Spilomelinae	<i>Piletocera</i>	<i>Piletocera sodalis</i> (Leech,1889)
142	Pyrloidea	Crambidae	Spilomelinae	<i>Piletocera</i>	<i>Cnaphalocrocis medinalis</i> (Guenée,1854)
143	Pyrloidea	Crambidae	Spilomelinae	<i>Poliobotys</i>	<i>Poliobotys ablactalis</i> (Walker,1859)
144	Pyrloidea	Crambidae	Spilomelinae	<i>Polythilpta</i>	<i>Polythilpta divaricata</i> (Moore,1885)
145	Pyrloidea	Crambidae	Pyraustinae	<i>Prooedema</i>	<i>Prooedema incisalis</i> (Walker,1866)
146	Pyrloidea	Crambidae	Spilomelinae	<i>Pygopsila</i>	<i>Pygopsila costiflexalis</i> (Guenée,1854)
147	Pyrloidea	Crambidae	Spilomelinae	<i>Pygopsila</i>	<i>Pygopsila tyres</i> (Cramer,1780)
148	Pyrloidea	Crambidae	Pyraustinae	<i>Pyrausta</i>	<i>Pyrausta sp.</i>
149	Pyrloidea	Crambidae	Spilomelinae	<i>Rehimena</i>	<i>Rehimena phrynealis</i> (Walker,1859)
150	Pyrloidea	Crambidae	Spilomelinae	<i>Rhimphalea</i>	<i>Rhimphalea ochalis</i> (Walker,1859)
151	Pyrloidea	Crambidae	Spilomelinae	<i>Rhimphaliodes</i>	<i>Rhimphalio demacrostigma</i> (Hampson,1893)
152	Pyrloidea	Crambidae	Schoenobiinae	<i>Scirpophaga</i>	<i>Scirpophaga excerptalis</i> (Walker,1863)

153	Pyrloidea	Crambidae	Schoenobiinae	<i>Scirpophaga</i>	<i>Scirpophaga incertulas</i> (Walker,1863)
154	Pyrloidea	Crambidae	Schoenobiinae	<i>Scirpophaga</i>	<i>Scirpophaga nivella</i> (Fabricius,1794)
155	Pyrloidea	Crambidae	Schoenobiinae	<i>Scirpophaga</i>	<i>Scirpophaga sp.</i>
156	Pyrloidea	Crambidae	Scopariinae	<i>Scopariinae</i>	<i>Scopariinae sp.</i>
157	Pyrloidea	Crambidae	Pyraustinae	<i>Spoladea</i>	<i>Spoladea recurvalis</i> (Fabricius,1775)
158	Pyrloidea	Crambidae	Lathrotelinae	<i>Sufetula</i>	<i>Sufetula sp.</i>
159	Pyrloidea	Crambidae	Spilomelinae	<i>Syngamia</i>	<i>Syngamia falsidicalis</i> (Walker,1859)
160	Pyrloidea	Crambidae	Spilomelinae	<i>Tabotys</i>	<i>Tabotys biannulalis</i> (Walker,1866)
161	Drepanoidea	Drepanidae	Drepaninae	<i>Canucha</i>	<i>Canucha specularis</i> (Moore,1879)
162	Drepanoidea	Drepanidae	Drepaninae	<i>Phalacra</i>	<i>Phalacra vidhisara</i> (Walker,1860)
163	Drepanoidea	Drepanidae	Drepaninae	<i>Callidrepana</i>	<i>Callidrepana patrana</i> (Moore,1866)
164	Drepanoidea	Drepanidae	Drepaninae	<i>Tridrepana</i>	<i>Tridrepana fulvata</i> (Snellen,1876)
165	Lasiocampoid ea	Lasiocampida e	Lasiocampina e	<i>Dendrolimus</i>	<i>Dendrolimus sp.</i>
166	Lasiocampoid ea	Lasiocampida e	Lasiocampina e	<i>Lebeda</i>	<i>Lebeda nobilis</i> (Walker,1855)
167	Lasiocampoid ea	Lasiocampida e	Lasiocampina e	<i>Streblote</i>	<i>Strebolate siva</i> (Lefebvre,1827)
168	Lasiocampoid ea	Lasiocampida e	Lasiocampina e	<i>Trabala</i>	<i>Trabala sp.</i>
169	Bombycoidea	Bombycidae	Bombycinae	<i>Ocinara</i>	<i>Ocinara albicolis</i> (Walker ,1862)
170	Bombycoidea	Bombycidae	Bombycinae	<i>Penicillifera</i>	<i>Penicillifera apicalis</i> (Walker,1862)
171	Bombycoidea	Eupterotidae	Eupterotinae	<i>Eupterote</i>	<i>Eupterote mollifera</i> (Walker,1865)
172	Bombycoidea	Eupterotidae	Eupterotinae	<i>Eupterote</i>	<i>Eupterote undata</i> (Blanchard, 1844)
173	Bombycoidea	Eupterotidae	Eupterotinae	<i>Eupterote</i>	<i>Eupterote lineosa</i> (Walker,1855)
174	Bombycoidea	Eupterotidae	Eupterotinae	<i>Ganisa</i>	<i>Ganisa similis</i> (Moore,1884)
175	Bombycoidea	Saturniidae	Saturniinae	<i>Actias</i>	<i>Actias keralana</i> (Nassig, Naumann & Giusti, 2020)
176	Bombycoidea	Saturniidae	Saturniinae	<i>Actias</i>	<i>Actias selene</i> (Hübner,1807)
177	Bombycoidea	Saturniidae	Saturniinae	<i>Attacus</i>	<i>Attacus taprobanis</i> (Moore,1882)
178	Bombycoidea	Saturniidae	Saturniinae	<i>Circula</i>	<i>Circula trifenestrata</i> (Helfer,1837)
179	Bombycoidea	Saturniidae	Saturniinae	<i>Loepa</i>	<i>Loepa schintmeisteri</i> (Brechlin,2000)

180	Bombycoidea	Sphingidae	Sphinginae	<i>Acherontia</i>	<i>Acherontia lachesis</i> (Fabricius,1798)
181	Bombycoidea	Sphingidae	Smerinthinae	<i>Ambulyx</i>	<i>Ambulyx aglaia</i> (Jordan,1923)
182	Bombycoidea	Sphingidae	Macroglossinae	<i>Angonyx</i>	<i>Angonyx krishna</i> (Eitschberger & Haxaire,2006)
183	Bombycoidea	Sphingidae	Macroglossinae	<i>Daphnis</i>	<i>Daphnis nerii</i> (Linnaeus,1758)
184	Bombycoidea	Sphingidae	Macroglossinae	<i>Hippotion</i>	<i>Hippotion rosetta</i> (C. Swinhoe,1892)
185	Bombycoidea	Sphingidae	Macroglossinae	<i>Hippotion</i>	<i>Hippotion celerio</i> (Linnaeus,1758)
186	Bombycoidea	Sphingidae	Macroglossinae	<i>Hippotion</i>	<i>Hippotion velox</i> (Fabricius,1793)
187	Bombycoidea	Sphingidae	Macroglossinae	<i>Hippotion</i>	<i>Hippotion boerhvaia</i> (Fabricius,1775)
188	Bombycoidea	Sphingidae	Macroglossinae	<i>Macroglossum</i>	<i>Macroglossum assimilis</i> (Swainson,1821)
189	Bombycoidea	Sphingidae	Macroglossinae	<i>Macroglossum</i>	<i>Macroglossum corythus</i> (Walker,1856)
190	Bombycoidea	Sphingidae	Macroglossinae	<i>Macroglossum</i>	<i>Macroglossum belis</i> (Linnaeus,1758)
191	Bombycoidea	Sphingidae	Macroglossinae	<i>Macroglossum</i>	<i>Macroglossum heliophila</i> (Walker,1856)
192	Bombycoidea	Sphingidae	Macroglossinae	<i>Macroglossum</i>	<i>Macroglossum particolor</i> (Rothschild & Jordan,1903)
193	Bombycoidea	Sphingidae	Macroglossinae	<i>Macroglossum</i>	<i>Macroglossum troglodytus</i> (Butler,1875)
194	Bombycoidea	Sphingidae	Smerinthinae	<i>Marumba</i>	<i>Marumba dyras</i> (Walker,1856)
195	Bombycoidea	Sphingidae	Smerinthinae	<i>Marumba</i>	<i>Marumba nympa</i> (Rothschild & Jordan,1903)
196	Bombycoidea	Sphingidae	Macroglossinae	<i>Pergesa</i>	<i>Pergesa acteus</i> (Cramer,1779)
197	Bombycoidea	Sphingidae	Macroglossinae	<i>Rhagastis</i>	<i>Rhagastis sp.</i>
198	Bombycoidea	Sphingidae	Sphinginae	<i>Psilogamma</i>	<i>Psilogamma vates</i> (Butler,1875)
199	Bombycoidea	Sphingidae	Macroglossinae	<i>Theretra</i>	<i>Theretra latreillii</i> (Macleay,1826)

200	Bombycoidea	Sphingidae	Macroglossinae	<i>Theretra</i>	<i>Theretra lycetus</i> (Cramer,1775)
201	Bombycoidea	Sphingidae	Macroglossinae	<i>Theretra</i>	<i>Theretra nessus</i> (Drury,1773)
202	Bombycoidea	Sphingidae	Macroglossinae	<i>Theretra</i>	<i>Theretra silhetensis</i> (Walker,1856)
203	Geometroidea	Uraniidae	Microniinae	<i>Acropteris</i>	<i>Acropteris striataria</i> (Clerck,1764)
204	Geometroidea	Uraniidae	Microniinae	<i>Micronia</i>	<i>Micronia aculeate</i> (Guenée,1857)
205	Geometroidea	Uraniidae		<i>Calledateryx</i>	<i>Calledateryx dryopterata</i> (Grote,1868)
206	Geometroidea	Uraniidae	Epipleminae	<i>Phazaca</i>	<i>Phazaca leucocera</i> (Hampson,1891)
207	Geometroidea	Geometridae	Ennominae	<i>Abraxa</i>	<i>Abraxa crocearia</i> (Hampson,1891)
208	Geometroidea	Geometridae	Ennominae	<i>Abraxa</i>	<i>Abraxa poliaria</i> (Swinhoe,1889)
209	Geometroidea	Geometridae	Ennominae	<i>Abraxa</i>	<i>Abraxas leucostola argyrosticta</i> (Hampson,1893)
210	Geometroidea	Geometridae	Geometrinae	<i>Agathia</i>	<i>Agathia laetata</i> (Fabricius,1794)
211	Geometroidea	Geometridae	Ennominae	<i>Amblychia</i>	<i>Amblychia angeronaria</i> (Guenée,1858)
212	Geometroidea	Geometridae	Ennominae	<i>Anavitrinella</i>	<i>Anavitrinella pampinaria</i> (Guenée,1857)
213	Geometroidea	Geometridae	Geometrinae	<i>Aporandaria</i>	<i>Aporandaria specularia</i> (Guenée,1857)
214	Geometroidea	Geometridae	Geometrinae	<i>Betra</i>	<i>Betra chrysolineata</i> (walker,1863)
215	Geometroidea	Geometridae	Ennominae	<i>Biston</i>	<i>Biston suppressaria</i> (Guenée,1858)
216	Geometroidea	Geometridae	Ennominae	<i>Borbacha</i>	<i>Borbacha sp.</i>
217	Geometroidea	Geometridae		<i>Calledateryx</i>	<i>Calledateryx dryopterata</i> (Grote,1868)
218	Geometroidea	Geometridae	Ennominae	<i>Catoria</i>	<i>Catoria sublavaria</i> (Guenée,1857)
219	Geometroidea	Geometridae	Ennominae	<i>Celenna</i>	<i>Celenna festivaria</i> (Fabricius,1794)
220	Geometroidea	Geometridae	Ennominae	<i>Chiasmia</i>	<i>Chiasmia perfusaria</i> (walker,1866)
221	Geometroidea	Geometridae	Ennominae	<i>Chiasmia</i>	<i>Chiasmia sp.</i>
222	Geometroidea	Geometridae	Geometrinae	<i>Chlorozancla</i>	<i>Chlorozancla falcatus</i> (Butler,1889)
223	Geometroidea	Geometridae	Ennominae	<i>Cleora</i>	<i>Cleora fraterana</i> (Moore, 1888)
224	Geometroidea	Geometridae	Geometrinae	<i>Comibaena</i>	<i>Comibaena sp.</i>

225	Geometroidea	Geometridae	Geometrinae	<i>Comostola</i>	<i>Comostola meritaria</i> (walker,1861)
226	Geometroidea	Geometridae	Geometrinae	<i>Dysphania</i>	<i>Dysphania percota</i> (C. Swinhoe,1891)
227	Geometroidea	Geometridae	Larentiinae	<i>Ecliptoptera</i>	<i>Ecliptopera rectilinear</i> Warren,1894
228	Geometroidea	Geometridae	Ennominae	<i>Ectropis</i>	<i>Ectropis bhurmitra</i> (Walker,1860)
229	Geometroidea	Geometridae	Larentiinae	<i>Eois</i>	<i>Eois dissimilis</i> (Moore,1887)
230	Geometroidea	Geometridae	Desmobathrinae	<i>Eumelea</i>	<i>Eumelea ludovicata</i> (Guenée,1858)
231	Geometroidea	Geometridae	Desmobathrinae	<i>Eumelea</i>	<i>Eumelea rosalia</i> (Stoll,1781)
232	Geometroidea	Geometridae	Larentiinae	<i>Eupithecia</i>	<i>Eupithecia subfuscata</i> (Haworth,1809)
233	Geometroidea	Geometridae	Ennominae	<i>Fascellina</i>	<i>Fascellina plagiata</i> (Walker,1866)
234	Geometroidea	Geometridae	Geometrinae	<i>Herochroma</i>	<i>Herochroma sp.</i>
235	Geometroidea	Geometridae	Ennominae	<i>Hyposidra</i>	<i>Hyposidra sp.</i>
236	Geometroidea	Geometridae	Ennominae	<i>Hyperythra</i>	<i>Hyperythra lutea</i> (Stoll,1781)
237	Geometroidea	Geometridae	Ennominae	<i>Hypomecis</i>	<i>Hypomecis cineraceae</i> (Moore,1888)
238	Geometroidea	Geometridae	Ennominae	<i>Hyposidra</i>	<i>Hyposidra talaca</i> (Walker,1860)
239	Geometroidea	Geometridae	Ennominae	<i>Hyposidra</i>	<i>Hyposidra violescens</i> (Hampson,1895)
240	Geometroidea	Geometridae	Sterrhinae	<i>Idaea</i>	<i>Idaea costiguttata</i> (Warren,1896)
241	Geometroidea	Geometridae	Sterrhinae	<i>Idaea</i>	<i>Idaea sp.</i>
242	Geometroidea	Geometridae	Sterrhinae	<i>Idaea</i>	<i>Idaea gemmaria</i> (Hampson,1896)
243	Geometroidea	Geometridae	Sterrhinae	<i>Idaea</i>	<i>Idaea violocaea</i> (Hampson,1891)
244	Geometroidea	Geometridae	Geometrinae	<i>Idiochlora</i>	<i>Idiochlora sp.</i>
245	Geometroidea	Geometridae	Ennominae	<i>Istrugia</i>	<i>Istrugia sp.</i>
246	Geometroidea	Geometridae		<i>Lophophlema</i>	<i>Lophophlema luteipes</i> (Felder & Rogenhofer,1875)
247	Geometroidea	Geometridae	Geometrinae	<i>Orathalassodes</i>	<i>Orothalassodes falsaria</i> (Prout,1912)
248	Geometroidea	Geometridae	Larentiinae	<i>Orthanama</i>	<i>Orthanama obstipata</i> (Fabricius,1794)
249	Geometroidea	Geometridae	Ennominae	<i>Ourapteryx</i>	<i>Ourapteryx marginata</i> (Hampson,1895)

250	Geometroidea	Geometridae	Geometrinae	<i>Pelagodes</i>	<i>Pelagodes antiquadraria</i> (Inoue,1976)
251	Geometroidea	Geometridae	Sterrhinae	<i>Perixera</i>	<i>Perixera sp.</i>
252	Geometroidea	Geometridae	Ennominae	<i>Petelia</i>	<i>Petelia medardaria</i> Herrich-(Schaffer,1856)
253	Geometroidea	Geometridae	Ennominae	<i>Petelia</i>	<i>Petelia sp.</i>
254	Geometroidea	Geometridae	Geometrinae	<i>Pingasa</i>	<i>Pingasa chlora</i> (Stoll,1782)
255	Geometroidea	Geometridae	Geometrinae	<i>Pingasa</i>	<i>Pingasa ruginera</i> (Guenée,1857)
256	Geometroidea	Geometridae	Ennominae	<i>Platycerota</i>	<i>Platycerota viticostata</i> (Walker,1863)
257	Geometroidea	Geometridae	Sterrhinae	<i>Problepis</i>	<i>Problepsis vulgaris</i> Butler,1889
258	Geometroidea	Geometridae	Geometrinae	<i>Protulioenemis</i>	<i>Protulioenemis castalaria</i> (Oberthür, 1916)
259	Geometroidea	Geometridae	Ennominae	<i>Psilalcis</i>	<i>Psilalcis bisinuata</i> (Hampson,1895)
260	Geometroidea	Geometridae	Sterrhinae	<i>Scopula</i>	<i>Scopula opicata</i> (Fabricius 1798)
261	Geometroidea	Geometridae	Sterrhinae	<i>Scopula</i>	<i>Scopula divisaria</i> (Walker,1861)
262	Geometroidea	Geometridae	Sterrhinae	<i>Scopula</i>	<i>Scopula emissaria</i> (Walker,1861)
263	Geometroidea	Geometridae	Sterrhinae	<i>Scopula</i>	<i>Scopula immutata</i> (Linnaeus,1758)
264	Geometroidea	Geometridae	Sterrhinae	<i>Scopula</i>	<i>Scopula umbilicata</i> (Fabricius,1794)
265	Geometroidea	Geometridae	Ennominae	<i>Sublepida</i>	Sublepida inoue
266	Geometroidea	Geometridae	Geometrinae	<i>Thalassodes</i>	<i>Thalassodes sp.</i>
267	Geometroidea	Geometridae	Sterrhinae	<i>Traminda</i>	<i>Traminda aventiaria</i> (Guenée,1858)
268	Geometroidea	Geometridae	Sterrhinae	<i>Traminda</i>	<i>Traminda convectaria</i> (Walker,1861)
269	Geometroidea	Geometridae	Ennominae	<i>Zamarada</i>	<i>Zamarada excise</i> (Hampson,1891)
270	Geometroidea	Geometridae	Larentiinae	<i>Ziridava</i>	<i>Ziridava kanshireiensis</i> (Prout,1958)
271	Noctuoidea	Notodontidae	Phalerinae	<i>Antheua</i>	<i>Antheua exanthemata</i> (Moore,1883)
272	Noctuoidea	Notodontidae	Periergosinae	<i>Chadisra</i>	<i>Chadisra sp.</i>
273	Noctuoidea	Notodontidae	Pyraustinae	<i>Clostera</i>	<i>Clostera restitura</i> (Walker,1865)
274	Noctuoidea	Notodontidae	Dudusinae	<i>Dudusa</i>	<i>Dudusa synopla</i> Swinhoe,1907
275	Noctuoidea	Notodontidae	Phalerinae	<i>Phalera</i>	<i>Phalera parivala</i> Moore,1859
276	Noctuoidea	Notodontidae	Stauropini	<i>Stauropus</i>	<i>Stauropus alternus</i> (Walker,1855)
277	Noctuoidea	Notodontidae	Stauropini	<i>Stauropus</i>	<i>Stauropus thiaucourti</i>

278	Noctuoidea	Erebidae	Erebinae	<i>Achaea</i>	<i>Achaea Janata</i> (Linnaeus,1758)
279	Noctuoidea	Erebidae	Arctiinae	<i>Aloa</i>	<i>Aloa lactinea</i> (Cramer,1777)
280	Noctuoidea	Erebidae	Arctiinae	<i>Aemene</i>	<i>Aemene taprobanis</i> (Walker,1854)
281	Noctuoidea	Erebidae	Arctiinae	<i>Amata</i>	<i>Amata bicincta</i> (Kollar,1844)
282	Noctuoidea	Erebidae	Arctiinae	<i>Amata</i>	<i>Amata cyssea</i> Stoll,1782
283	Noctuoidea	Erebidae	Arctiinae	<i>Amata</i>	<i>Amata extensa</i> (Walker,1866)
284	Noctuoidea	Erebidae	Arctiinae	<i>Amata</i>	<i>Amata passalis</i> (Fabricius,1781)
285	Noctuoidea	Erebidae	Arctiinae	<i>Amerila</i>	<i>Amerila astreus</i> (Drury,1773)
286	Noctuoidea	Erebidae	Arctiinae	<i>Ammatho</i>	<i>Ammatho cuneonotatus</i> (Walker,1855)
287	Noctuoidea	Erebidae	Scoliopteryginae	<i>Anomis</i>	<i>Anomis flava</i> (Fabricius,1775)
288	Noctuoidea	Erebidae	Anobinae	<i>Anoba</i>	<i>Anoba polyspila</i> (Walker,1865)
289	Noctuoidea	Erebidae	Boletobiinae	<i>Araeopteron</i>	<i>Araeopteron sp.</i>
290	Noctuoidea	Erebidae	Acontiinae	<i>Arasada</i>	<i>Arasada sp.</i>
291	Noctuoidea	Erebidae	Lymantriinae	<i>Arctornis</i>	<i>Arctornis comma</i> (Hutton,1865)
292	Noctuoidea	Erebidae	Lymantriinae	<i>Arctornis</i>	<i>Arctornis marginata</i> (Moore,1883)
293	Noctuoidea	Erebidae	Lymantriinae	<i>Arctornis</i>	<i>Arctornis submarginata</i> (Moore,1883)
294	Noctuoidea	Erebidae	Lymantriinae	<i>Arctornis</i>	<i>Arctornis sp.</i>
295	Noctuoidea	Erebidae	Lymantriinae	<i>Artaxa</i>	<i>Artaxa guttata</i> (Walker,1855)
296	Noctuoidea	Erebidae	Lymantriinae	<i>Artaxa</i>	<i>Artaxa inconcisa</i> (Walker,1865)
297	Noctuoidea	Erebidae	Lymantriinae	<i>Artaxa</i>	<i>Artaxa sp. 1</i>
298	Noctuoidea	Erebidae	Lymantriinae	<i>Artaxa</i>	<i>Artaxa sp. 2</i>
299	Noctuoidea	Erebidae	Aganainae	<i>Asota</i>	<i>Asota canaraica</i> (Moore,1878)
300	Noctuoidea	Erebidae	Aganainae	<i>Asota</i>	<i>Asota caricae</i> (Fabricius,1775)
301	Noctuoidea	Erebidae	Aganainae	<i>Asota</i>	<i>Asota heliconia</i> (Linnaeus,1758)
302	Noctuoidea	Erebidae	Aganainae	<i>Asota</i>	<i>Asota plana</i> (Walker,1854)
303	Noctuoidea	Erebidae	Aganainae	<i>Asota</i>	<i>Asota sericea</i> (Moore,1878)
304	Noctuoidea	Erebidae	Erebinae	<i>Attatha</i>	<i>Attatha regalis</i> (Moore,1872)
305	Noctuoidea	Erebidae	Arctiinae	<i>Barsine</i>	<i>Barsine sp. 1</i>
306	Noctuoidea	Erebidae	Arctiinae	<i>Barsine</i>	<i>Barsine defecta</i> (Walker,1854)

307	Noctuoidea	Erebidae	Arctiinae	<i>Barsine</i>	<i>Barsine sp. 2</i>
308	Noctuoidea	Erebidae	Erebinae	<i>Bastilla</i>	<i>Bastilla joviana</i> (Stoll,1782)
309	Noctuoidea	Erebidae	Erebinae	<i>Bastilla</i>	<i>Bastilla arcuate</i> (Moore,1877)
310	Noctuoidea	Erebidae	Rivulinae	<i>Bocula</i>	<i>Bocula marginata</i> (Moore,1882)
311	Noctuoidea	Erebidae	Arctiinae	<i>Brunia</i>	<i>Brunia antica</i> (Walker,1854)
312	Noctuoidea	Erebidae	Erebinae	<i>Buzara</i>	<i>Buzara onelia</i> (Guenée,1852)
313	Noctuoidea	Erebidae	Erebinae	<i>Catocala</i>	<i>Catocala macula</i> (Hampson,1891)
314	Noctuoidea	Erebidae	Boletobiinae	<i>Cerynea</i>	<i>Cerynea punctilinealis</i> (Walker,1866)
315	Noctuoidea	Erebidae	Arctiinae	<i>Chamaita</i>	<i>Chamaita sp.</i>
316	Noctuoidea	Erebidae	Arctiinae	<i>Nyctemera</i>	<i>Nyctemera coleta</i> (Stoll,1782)
317	Noctuoidea	Erebidae	Boletobiinae	<i>Corgatha</i>	<i>Corgatha semipardata</i> (Walker,1862)
318	Noctuoidea	Erebidae	Arctiinae	<i>Cretonotas</i>	<i>Cretonotas transiens</i> (Walker,1855)
319	Noctuoidea	Erebidae	Arctiinae	<i>Cretonotas</i>	<i>Cretonotos gangis</i> (Linnaeus,1763)
320	Noctuoidea	Erebidae	Arctiinae	<i>Cyana</i>	<i>Cyana puella</i> (Drury,1763)
321	Noctuoidea	Erebidae	Arctiinae	<i>Cyana</i>	<i>Cyana bhatejai</i> (Singh & Kirti 2015)
322	Noctuoidea	Erebidae	Arctiinae	<i>Cyana</i>	<i>Cyana peregrina</i> (Walker,1854)
323	Noctuoidea	Erebidae	Lymantriinae	<i>Dasychira</i>	<i>Dasychira thwaitesii</i> (Moore,1883)
324	Noctuoidea	Erebidae	Arctiinae	<i>Diduga</i>	<i>Diduga sp.</i>
325	Noctuoidea	Erebidae	Aganainae	<i>Digama</i>	<i>Digama marchalii</i> (Guérin- Méneville, 1843)
326	Noctuoidea	Erebidae	Boletobiinae	<i>Dunira</i>	<i>Dunira maculapex</i> (Hampson,1893)
327	Noctuoidea	Erebidae	Calpinae	<i>Egnasia</i>	<i>Egnasia ephyrodalis</i> (Walker,1858)
328	Noctuoidea	Erebidae		<i>Episaris</i>	<i>Episaris tortusalis</i>
329	Noctuoidea	Erebidae	Boletobiinae	<i>Enispa</i>	<i>Enispa regulata</i> (Walker,1861)
330	Noctuoidea	Erebidae	Erebinae	<i>Erebus</i>	<i>Erebus hieroglyphica</i> (Drury,1773)
331	Noctuoidea	Erebidae	Erebinae	<i>Erebus</i>	<i>Erebus macrops</i> (Linnaeus,1768)
332	Noctuoidea	Erebidae	Erebinae	<i>Erebus</i>	<i>Ericeia inangulata</i> (Guenée,1852)
333	Noctuoidea	Erebidae	Erebinae	<i>Ericeia</i>	<i>Ericeia pretendens</i> (Guenée,1852)
334	Noctuoidea	Erebidae	Calpinae	<i>Eudocima</i>	<i>Eudocima cajeta</i> (Cramer,1775)
335	Noctuoidea	Erebidae	Calpinae	<i>Eudocima</i>	<i>Eudocima homaena</i> (Hübner,1816)

336	Noctuoidea	Erebidae	Calpinae	<i>Eudocima</i>	<i>Eudocima hypermnestra</i> (Cramer,1780)
337	Noctuoidea	Erebidae	Calpinae	<i>Eudocima</i>	<i>Eudocima materna</i> (Linnaeus,1767)
338	Noctuoidea	Erebidae	Arctiinae	<i>Eugo</i>	<i>Eugo basipuncta</i> (Hampson,1891)
339	Noctuoidea	Erebidae	Lymantriinae	<i>Euproctis</i>	<i>Euproctis scintillans</i> (Walker,1856)
340	Noctuoidea	Erebidae	Arctiinae	<i>Garudina</i>	<i>Garudinia pseudosimulana</i> (Kirti & Gill 2009)
341	Noctuoidea	Erebidae	Boletobiinae	<i>Gesonia</i>	<i>Gesonia sp.</i>
342	Noctuoidea	Erebidae	Hypeninae	<i>Goniocrasoedon</i>	<i>Goniocraspedon mistura</i> (Swinhoe,1891)
343	Noctuoidea	Erebidae	Boletobiinae	<i>Homodes</i>	<i>Homodes crocera</i> (Guenée,1852)
344	Noctuoidea	Erebidae	Boletobiinae	<i>Homodes</i>	<i>Homodes vivida</i> (Guenée,1852)
345	Noctuoidea	Erebidae	Erebinae	<i>Hulodes</i>	<i>Hulodes caranea</i> (Cramer,1780)
346	Noctuoidea	Erebidae	Hypeninae	<i>Hypena</i>	<i>Hypena sp. 1</i>
347	Noctuoidea	Erebidae	Hypeninae	<i>Hypena</i>	<i>Hypena sp. 2</i>
348	Noctuoidea	Erebidae	Erebinae	<i>Hypopyra</i>	<i>Hypopyra vespertilio</i> (Fabricius,1787)
349	Noctuoidea	Erebidae	Arctiinae	<i>Juxtartia</i>	<i>Juxtartia multuguttata</i> (Walker,1855)
350	Noctuoidea	Erebidae	Lymantriinae	<i>Laelia</i>	<i>Laelia sp.</i>
351	Noctuoidea	Erebidae	Boletobiinae	<i>Laspeyria</i>	<i>Laspeyria viridicincta</i>
352	Noctuoidea	Erebidae	Arctiinae	<i>Lemyra</i>	<i>Lemyra sp.1</i>
353	Noctuoidea	Erebidae	Arctiinae	<i>Lemyra</i>	<i>Lemyra sp.2</i>
354	Noctuoidea	Erebidae	Hypenodinae	<i>Luceria</i>	<i>Luceria sp.</i>
355	Noctuoidea	Erebidae	Arctiinae	<i>Lyclene</i>	<i>Lyclene arcuata</i> (Moore,1882)
356	Noctuoidea	Erebidae	Erebinae	<i>Lygniodes</i>	<i>Lygniodes vampyrus</i> (Fabricius,1794)
357	Noctuoidea	Erebidae	Lymantriinae	<i>Lymantria</i>	<i>Lymantria ampla</i> (Walker,1855)
358	Noctuoidea	Erebidae	Lymantriinae	<i>Lymantria</i>	<i>Lymantria incerta</i> (Walker,1855)
359	Noctuoidea	Erebidae	Lymantriinae	<i>Lymantria</i>	<i>Lymantria todara</i> (Moore,1879)
360	Noctuoidea	Erebidae	Lymantriinae	<i>Lymantria</i>	<i>Lymantria</i>
361	Noctuoidea	Erebidae	Arctiinae	<i>Macatasa</i>	<i>Macatasa orientalis</i>

362	Noctuoidea	Erebidae	Arctiinae	<i>Machrobrachis</i>	<i>Machrobrachis gigas</i> (Walker,1854)
363	Noctuoidea	Erebidae	Arctiinae	<i>Mangina</i>	<i>Mangina argus</i> (Kollar,1844)
364	Noctuoidea	Erebidae	Aganainae	<i>Mecodina</i>	<i>Mecodina albodentata</i> (Swinhoe,1895)
365	Noctuoidea	Erebidae	Boletobiinae	<i>Metalectra</i>	<i>Metalectra discalis</i> (Grote,1876)
366	Noctuoidea	Erebidae	Arctiinae	<i>Miltochrista</i>	<i>Miltochrista arcuata</i> (Moore,1882)
367	Noctuoidea	Erebidae	Arctiinae	<i>Miltochrista</i>	<i>Miltochrista conjunctana</i> (Walker,1866)
368	Noctuoidea	Erebidae	Arctiinae	<i>Miltochrista</i>	<i>Miltochrista strigivenata</i> (Hampson,1894)
369	Noctuoidea	Erebidae	Arctiinae	<i>Miltochrista</i>	<i>Miltochrista sp.1</i>
370	Noctuoidea	Erebidae	Arctiinae	<i>Miltochrista</i>	<i>Miltochrista sp.2</i>
371	Noctuoidea	Erebidae	Erebinae	<i>Mocis</i>	<i>Mocis undata</i> (Fabricius,1775)
372	Noctuoidea	Erebidae	Arctiinae	<i>Nephelomita</i>	<i>Nephelomita suffusa</i> (Hampson,1891)
373	Noctuoidea	Erebidae	Herminiinae	<i>Nodaria</i>	<i>Nodaria externalis</i> (Guenée,1854)
374	Noctuoidea	Erebidae	Calpinae	<i>Nolasena</i>	<i>Nolasena ferrifervens</i> (Walker,1858)
375	Noctuoidea	Erebidae	Erebinae	<i>Ophiusa</i>	<i>Ophiusa trihaca</i> (Cramer,1777)
376	Noctuoidea	Erebidae	Lymantriinae	<i>Nygmia</i>	<i>Nygmia icilia</i> (Stoll,1790)
377	Noctuoidea	Erebidae	Arctiinae	<i>Nyctemera</i>	<i>Nyctemera adversata</i> (Schaller,1788)
378	Noctuoidea	Erebidae	Lymantriinae	<i>Olene</i>	<i>Olene mendosa</i> (Hübner,1823)
379	Noctuoidea	Erebidae	Lymantriinae	<i>Olene</i>	<i>Olepa ricini</i> (Fabricius,1775)
380	Noctuoidea	Erebidae	Lymantriinae	<i>Olene</i>	<i>Olene sp.</i>
381	Noctuoidea	Erebidae	Boletobiinae	<i>Olulis</i>	<i>Olulis sp.</i>
382	Noctuoidea	Erebidae	Lymantriinae	<i>Olene</i>	<i>Olene sp.</i>
383	Noctuoidea	Erebidae	Lymantriinae	<i>Orvasca</i>	<i>Orvasca subnotata</i> (Walker,1865)
384	Noctuoidea	Erebidae	Calpinae	<i>Oraesia</i>	<i>Oraesia emarginata</i> (Fabricius,1794)
385	Noctuoidea	Erebidae	Lymantriinae	<i>Orygia</i>	<i>Orygia postica</i> (Walker,1855)
386	Noctuoidea	Erebidae	Herminiinae	<i>Oxaenanus</i>	<i>Oxaenanus brontesalis</i> (Walker,1859)
387	Noctuoidea	Erebidae	Erebinae	<i>Oxyodes</i>	<i>Oxyodes billeti</i>
388	Noctuoidea	Erebidae	Arctiinae	<i>Padenia</i>	<i>Padenia tranversa</i> (Walker,1854)

389	Noctuoidea	Erebidae	Arctiinae	<i>Pangora</i>	<i>Pangora matherana</i> (Moore,1879)
390	Noctuoidea	Erebidae	Erebinae	<i>Pericyma</i>	<i>Pericyma cruegeri</i> (Butler,1886)
391	Noctuoidea	Erebidae	Lymantriinae	<i>Perina</i>	<i>Perina nuda</i> (Fabricius,1787)
392	Noctuoidea	Erebidae	Calpinae	<i>Dierna</i>	<i>Dierna patibulum</i> (Fabricius,1794)
393	Noctuoidea	Erebidae	Calpinae	<i>Phyllodes</i>	<i>Phyllodes consobrina</i> (Westwood,1848)
394	Noctuoidea	Erebidae	Erebinae	<i>Polydesma</i>	<i>Polydesma</i> sp.
395	Noctuoidea	Erebidae	Arctiinae	<i>Prabhasa</i>	<i>Zadadra distorta</i> (Moore,1872)
396	Noctuoidea	Erebidae	Scoliopteryginae	<i>Rusicada</i>	<i>Rusicada combinans</i> (Walker,1858)
397	Noctuoidea	Erebidae	Scoliopteryginae	<i>Rusicada</i>	<i>Rusicada fulvida</i> Guenée,1852
398	Noctuoidea	Erebidae	Herminiinae	<i>Simplica</i>	<i>Simplica bimarginata</i> (Walker,1864)
399	Noctuoidea	Erebidae	Lymantriinae	<i>Somena</i>	<i>Somena scintillans</i> (Walker,1856)
400	Noctuoidea	Erebidae	Erebinae	<i>Ischyja</i>	<i>Ischyja manila</i> (Cramer,1776)
401	Noctuoidea	Erebidae	Erebinae	<i>Sphingomorpha</i>	<i>Sphingomorpha chlorea</i> (Cramer,1777)
402	Noctuoidea	Erebidae	Arctiinae	<i>Spilosoma</i>	<i>Spilosoma</i> sp.
403	Noctuoidea	Erebidae	Arctiinae	<i>Syntomoides</i>	<i>Syntomoides imaon</i> (Cramer,1780)
404	Noctuoidea	Erebidae	Arctiinae	<i>Teulisna</i>	<i>Teulisna obliquistria</i> (Hampson,1894)
405	Noctuoidea	Erebidae	Erebinae	<i>Thyas</i>	<i>Thyas coronate</i> (Fabricius,1775)
406	Noctuoidea	Erebidae	Arctiinae	<i>Thysanopteryx</i>	<i>Thysanopteryx sordida</i> (Butler,1881)
407	Noctuoidea	Erebidae	Tinoliinae	<i>Calesia</i>	<i>Calesia fuscicorpus</i> (Hampson,1891)
408	Noctuoidea	Erebidae	Tinoliinae	<i>Tinolius</i>	<i>Tinolius eburneigutta</i> (Walker,1855)
409	Noctuoidea	Erebidae	Erebinae	<i>Trigonodes</i>	<i>Trigonodes cephise</i> (Cramer,1779)
410	Noctuoidea	Erebidae	Erebinae	<i>Trigonodes</i>	<i>Trigonodes hypasia</i> (Cramer,1779)
411	Noctuoidea	Erebidae	Boletobiinae	<i>Eublemma</i>	<i>Eublemma accedens</i> (Felder & Rogenhofer,1874)
412	Noctuoidea	Erebidae	Boletobiinae	<i>Eublemma</i>	<i>Eublemma olivacea</i> (Walker,1858)
413	Noctuoidea	Erebidae	Boletobiinae	<i>Eublemma</i>	<i>Eublemma anachoresis</i> (Wallengren,1863)
414	Noctuoidea	Erebidae	Boletobiinae	<i>Eublemma</i>	<i>Eublemma</i> sp.

415	Noctuoidea	Erebidae	Boletobiinae	<i>Eublemma</i>	<i>Eublemma sp.</i>
416	Noctuoidea	Erebidae	Arctiinae	<i>Gampola</i>	<i>Gampola sp.</i>
417	Noctuoidea	Erebidae	Arctiinae	<i>Nishada</i>	<i>Nishada flabrifera</i> (Moore,1878)
418	Noctuoidea	Erebidae	Arctiinae	<i>Utetheisa</i>	<i>Utetheisa pulchella</i> (Linnaeus,1758)
419	Noctuoidea	Erebidae	Rivulinae	<i>Rivula</i>	<i>Rivula sp.</i>
420	Noctuoidea	Erebidae	Erebinae	<i>Spirama</i>	<i>Spirama sp.</i>
421	Noctuoidea	Erebidae	Herminiinae	<i>Hioepa</i>	<i>Hioepa fractalis</i> (Guenée,1854)
422	Noctuoidea	Erebidae	Herminiinae	<i>Herminia</i>	<i>Herminia cidaroides</i> (Hampson,1891)
423	Noctuoidea	Erebidae		Blasticorhinu s	<i>Blasticorhinus rivulosa</i> (Walker,1865)
424	Noctuoidea	Erebidae	Erebinae	<i>Hypocala</i>	<i>Hypocala affinis</i> (Rothschild, 1915)
425	Noctuoidea	Erebidae	Boletobiinae	<i>Zurobata</i>	<i>Zurobata vacilans</i> (walker,1864)
426	Noctuoidea	Eutellidae	Stictoperinae	<i>Lophoptera</i>	<i>Lophoptera sp.</i>
427	Noctuoidea	Eutellidae	Stictoperinae	<i>Lophoptera</i>	<i>Lophoptera squammigera</i> (Guenée,1852)
428	Noctuoidea	Eutellidae	Euteliinae	<i>Chlumetia</i>	<i>Chlumetia cf. transversa</i>
429	Noctuoidea	Nolidae		<i>Barosa</i>	<i>Barosa sp.</i>
430	Noctuoidea	Nolidae	Chloephorinae	<i>Blenina</i>	<i>Blenina sp.</i>
431	Noctuoidea	Nolidae	Chloephorinae	<i>Carea</i>	<i>Carea angulata</i> (Fabricius,1793)
432	Noctuoidea	Nolidae	Chloephorinae	<i>Carea</i>	<i>Care varipes</i> (Walker,1857)
433	Noctuoidea	Nolidae	Eariadinae	<i>Earias</i>	<i>Earias flavida c.</i> (Felder,1861)
434	Noctuoidea	Nolidae	Eligminae	<i>Eligma</i>	<i>Eligma narcissus</i> (Cramer, 1775)
435	Noctuoidea	Nolidae	Chloephorinae	<i>Maurilia</i>	<i>Maurilia sp.1</i>
436	Noctuoidea	Nolidae	Chloephorinae	<i>Maurilia</i>	<i>Maurilia sp.2</i>
437	Noctuoidea	Nolidae	Nolinae	<i>Nola</i>	<i>Nola analis</i> (Wileman & West,1928)
438	Noctuoidea	Nolidae	Nolinae	<i>Nola</i>	<i>Nola fasciata</i> (Walker,1866)
439	Noctuoidea	Nolidae		<i>Nolathrip</i>	<i>Nolathrip sp.</i>
440	Noctuoidea	Nolidae	Chloephorinae	<i>Paracrama</i>	<i>Paracrama latimargo</i> (Warren, 1916)
441	Noctuoidea	Nolidae	Nolinae	<i>Proneca</i>	<i>Proneca fola</i> (Swinhoe,1890)

442	Noctuoidea	Nolidae	Westermanninae	<i>Pterogonia</i>	<i>Pterogonia cardinalis</i> (Holloway,1976)
443	Noctuoidea	Nolidae	Eligminae	<i>Selepa</i>	<i>Selepa celtis</i> (Moore,1858)
444	Noctuoidea	Nolidae	Westermanninae	<i>Westermannia</i>	<i>Westermannia superba</i> (Hübner,1823)
445	Noctuoidea	Nolidae	Bagisarinae	<i>Xanthodes</i>	<i>Xanthodes transversa</i> (Guenée,1852)
446	Noctuoidea	Nolidae	Risobinae	<i>Risoba</i>	<i>Risoba sp.</i>
447	Noctuoidea	Noctuidae	Acontiinae	<i>Acontia</i>	<i>Acontia crocata</i> (Guenée,1852)
448	Noctuoidea	Noctuidae	Acontiinae	<i>Acontia</i>	<i>Acontia sp.</i>
449	Noctuoidea	Noctuidae	Eustrotiinae	<i>Amyna</i>	<i>Amyna axis</i> (Guenée,1852)
450	Noctuoidea	Noctuidae	Eustrotiinae	<i>Amyna</i>	<i>Amyna natalis</i> (Walker,1858)
451	Noctuoidea	Noctuidae	Eustrotiinae	<i>Amyna</i>	<i>Amyna punctum</i> (Fabricius,1794)
452	Noctuoidea	Noctuidae	Eustrotiinae	<i>Amyna</i>	<i>Amyna sp.</i>
453	Noctuoidea	Noctuidae	Hadeninae	<i>Athetis</i>	<i>Athetis sp.</i>
454	Noctuoidea	Noctuidae	Condicinae	<i>Bagada</i>	<i>Bagada sp.</i>
455	Noctuoidea	Noctuidae	Calpinae	<i>Batracharta</i>	<i>Batracharta obliqua</i> (Walker,1862)
456	Noctuoidea	Noctuidae	Herminiinae	<i>Bertula</i>	<i>Bertula abjudicalis</i> (Walker,1859)
457	Noctuoidea	Noctuidae	Amphipyridae	<i>Callyna</i>	<i>Callyna monoleuca</i> (Walker,1858)
458	Noctuoidea	Noctuidae	Plusiinae	<i>chrysodeixis</i>	<i>Chrysodeixis acuta</i> (Walker,1858)
459	Noctuoidea	Noctuidae	Plusiinae	<i>chrysodeixis</i>	<i>Chrysodeixis eriosoma</i> (Doubleday,1843)
460	Noctuoidea	Noctuidae	Condicinae	<i>Condica</i>	<i>Condica illecta</i> (Walker,1865)
461	Noctuoidea	Noctuidae		<i>Ctenophora</i>	<i>Ctenoplusia tarassota</i> (Hampson, 1913)
462	Noctuoidea	Noctuidae	Plusiinae	<i>Ctenophora</i>	<i>Ctenoplusia frucifera</i> (Walker,1858)
463	Noctuoidea	Noctuidae	Dyopsinae	<i>Cyclodes</i>	<i>Cyclodes omma</i> (Van der Hoeven,1840)
464	Noctuoidea	Noctuidae	Agaristinae	<i>Episteme</i>	<i>Episteme adulatrix</i> (Kollar,1844)
465	Noctuoidea	Noctuidae	Agaristinae	<i>Episteme</i>	<i>Episteme latimargo</i> (Hampson,1891)
466	Noctuoidea	Noctuidae	Hadeninae	<i>Lacinipolia</i>	<i>Lacinipolia sp.</i>
467	Noctuoidea	Noctuidae	Eustrotiinae	<i>Maliattha</i>	<i>Maliattha separate</i> (Walker,1863)
468	Noctuoidea	Noctuidae	Eustrotiinae	<i>Maliattha</i>	<i>Maliattha signifera</i> (Walker,1857)

469	Noctuoidea	Noctuidae	Eustrotiinae	<i>Maliatha</i>	<i>Maliattha sp.</i>
470	Noctuoidea	Noctuidae	Eustrotiinae	<i>Ozarba</i>	<i>Ozarba punctigera</i> (Walker,1865)
471	Noctuoidea	Noctuidae		<i>Polygrammat e</i>	<i>Polygrammate sp.</i>
472	Noctuoidea	Noctuidae	Noctuinae	<i>Polytela</i>	<i>Polytela gloriosae</i> (Fabricius,1781)
473	Noctuoidea	Noctuidae		<i>Progonia</i>	<i>Progonia oileusalis</i> (Walker,1859)
474	Noctuoidea	Noctuidae	Noctuinae	<i>Spodoptera</i>	<i>Spodoptera litura</i> (Fabricius,1775)
475	Noctuoidea	Noctuidae	Noctuinae	<i>Spodoptera</i>	<i>Spodoptera pectin</i> (Guenée,1852)
476	Noctuoidea	Noctuidae	Noctuinae	<i>Trachea</i>	<i>Trachea auriplena</i> (Walker,1857)
477	Noctuoidea	Noctuidae		<i>Tramba</i>	<i>Tamba mnionomera</i> (Hampson,1926)
478	Noctuoidea	Noctuidae	Noctuinae	<i>Xenotrachea</i>	<i>Xenotrachea albidisaca</i> (Moore,1867)
479	Noctuoidea	Noctuidae	Hadeninae	<i>Yepcalpis</i>	<i>Yepcalpis dilectissima</i> (Walker,1858)
480	Noctuoidea	Noctuidae	Plusiinae	<i>Zonoplusia</i>	<i>Zonoplusia ochreata</i> (Walker,1865)
481	Choreutidea	Choreutidae	Brenthiinae	<i>Brenthia</i>	<i>Brenthia</i> (Clemens,1860)
482	Cossoidea	Metarbelidae		<i>Indarbela</i>	<i>Indarbela quadrinotata</i> (Walker,1856)
483	Gelechioidea	Autostichidae	Periacmini	<i>Periacma</i>	

